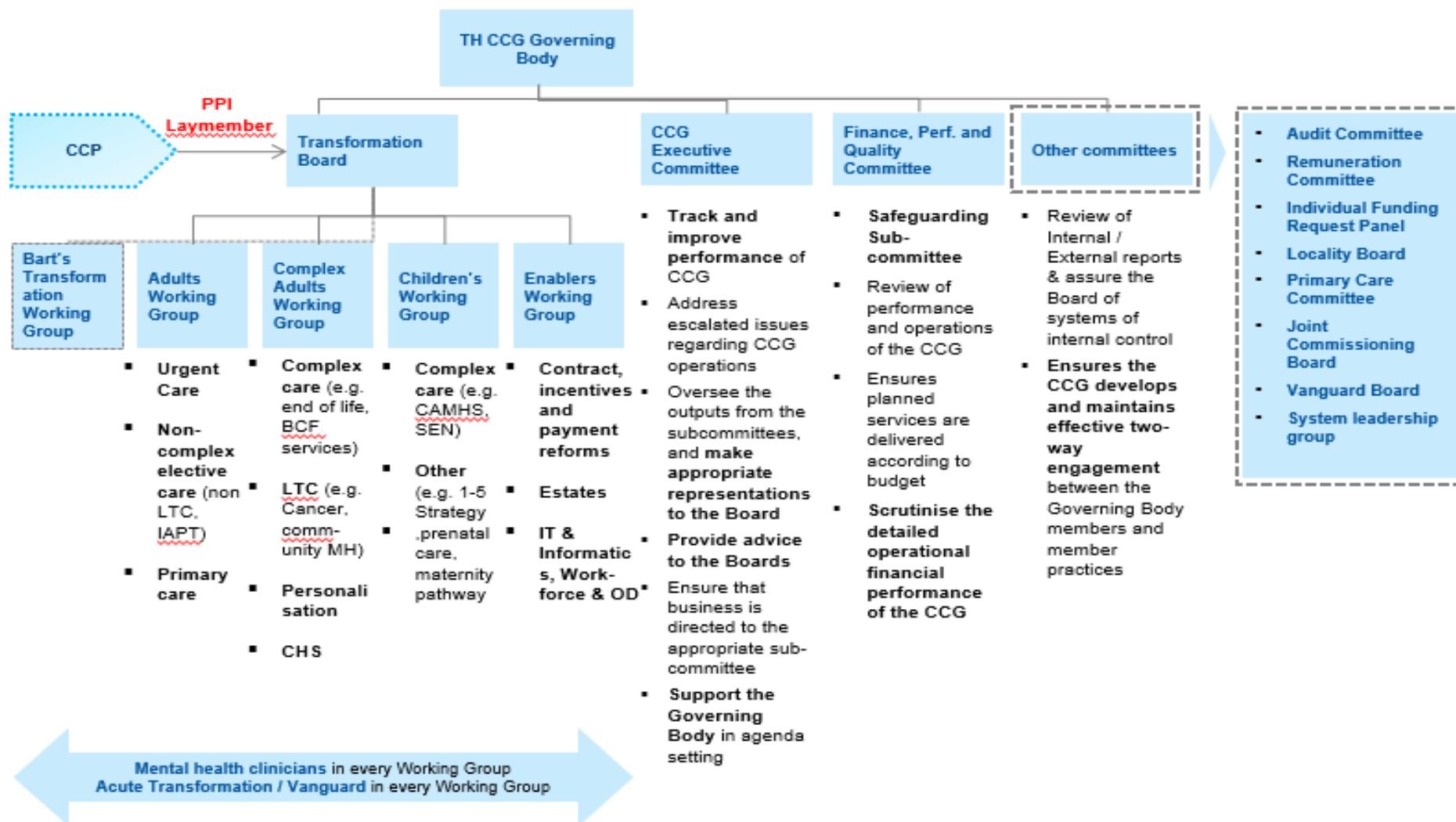


THCCG Governance Structure 2016-17



Tower Hamlets Clinical Commissioning Group

- PPI Laymember- Julia Slay
- Vice chair Governing body
- Chair transformation board
- CCP (decide chair or member)



ToR for CCP

The CCP will support THCCG in being transparent and publicly accountable by:

1. Contributing to THCCG strategies and plans through consultation and feedback at relevant stages of their development.

- Informing respective Commissioning leads and suggesting and providing ideas/feedback/solution generating, to promote the effective use of THCCG resources
- Reviewing and commenting on communications/publications aimed at patient and public audience

2. The Panel will challenge THCCG strategies and plans when appropriate to ensure they have considered the needs to service users, patients and carers.

3. Offering patients' voice and perspective on appropriate committees, focus groups, patient panels etc. to feed into THCCG decision making processes in order to improve and enhance services and identify areas for service improvement . This will be done in a number of ways, including:

- Bringing appropriate case studies and examples to appropriate committees, focus groups, patient panels etc. to feed into THCCG decision making processes in order to improve and enhance service

4. Supporting and advising THCCGs engagement and public involvement work helping THCCG to connect with key groups, and local community groups to maximise service users, patient and carer involvement.

How

1. Review of business cases from working groups prior to sign off at Transformation Board

2. Review of business cases and prospectus prior to sign off

3. Individual involvement in programmes – via patient leader route

4. Working with the Corporate Affairs team via the Engagement Manager