



**Tower Hamlets**  
Clinical Commissioning Group



**TOWER HAMLETS**

# Tower Hamlets SEND Strategy 2018-2023 Summary

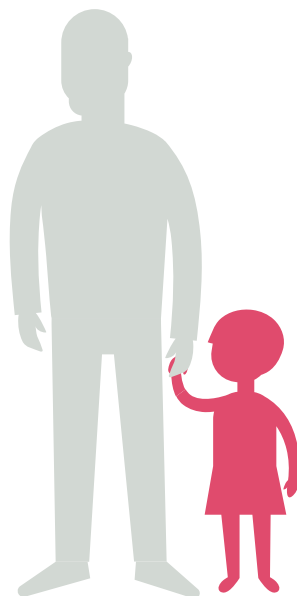
# Introduction

The new SEND strategy sets out our plans for the education and care of children and young people with **special education needs and disabilities (SEND)** in Tower Hamlets for 2018 – 2023.

Many children and young people with SEND, along with their families, rely on support from schools, the council, the NHS and voluntary organisations.

We spend around **£50 million a year in Tower Hamlets** across schools, agencies and services for children and young people with SEND. We know that we can do a better job of coordinating this. The strategy sets out plans to organise both services and budgets so that children and young people with SEND do even better in the future.

The strategy will make sure there are more opportunities and **better information about care and education** across the board. We will also make it simpler for parents/carers to be involved in the big decisions about SEND, as well as with those about the care of their own child, and we will produce updates every year about how it is going.



# SEND in Tower Hamlets

Out of 47,000 children and young people in Tower Hamlets around 7,900 (or 17%) get additional support with their special education needs and disabilities (SEND), which may include:

- Autistic spectrum disorder
- Physical disability
- Social, emotional and mental health needs
- Profound and multiple learning difficulty
- Specific learning difficulty
- Moderate learning difficulty
- Severe learning difficulty
- Hearing impairment
- Visual impairment
- Multi-sensory impairment
- Speech, language and communication needs

Tower Hamlets ranks as having one of the highest proportions of children in the country with SEND.

## Additional help

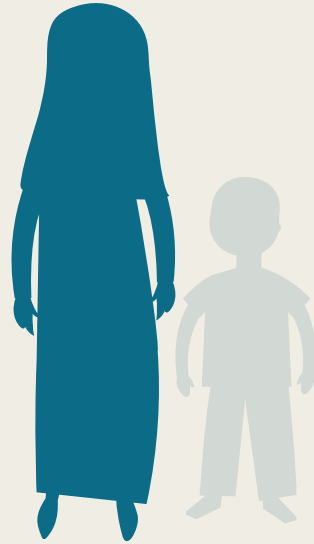
All children and young people with SEND receive additional help with their learning at school. About 1 in 4, however, have high needs. That means they might need extra help from health professionals and care services, as well as from their school. These children will have a statutory education health and care (EHC) plan: a plan which explains the extra help and support the child or young person should have so they are able to learn well at school.

## Population growth

The number of children with SEND is expected to keep pace with projected population growth over the next ten years. Although we do not know exactly, this might mean that we have as many as 600 more children and young people with SEND with an EHC plan.

# The vision

**For all Tower Hamlets' children and young people with special educational needs and disabilities (SEND) to lead fulfilling lives and be as independent as possible; supported to learn, thrive and achieve by their families, services and local communities.**



## Principles and the SEND Charter

**The fundamental principles that will underpin SEND in Tower Hamlets:**

- All services will provide high-quality education and care.
- Education, health and social care services will work well together, supported by voluntary and independent organisations, and share accurate information in the best interest of the child and their family.
- Children, young people and their parents/carers will help to plan and make choices about their support as much as possible.

- Funding and support is allocated fairly and openly.
- Children and young people are helped to be as independent as possible.
- Additional needs are identified as early as possible and services made available locally, within supportive communities.

We will work with parent and carer representatives, and children and young people to turn these principles into a "Tower Hamlets SEND Charter" and promote it.

# Priorities

## Priority 1

### Leading SEND

- Launch a new SEND strategic accountability group, which will make key decisions and act as a central route for local decision making on SEND. The group will include headteacher and parent and carer representation.
- New planning systems will ensure there are enough school places locally for children and young people with SEND, particularly those with an EHC plan.
- We will use improved statistics, data collection and other information so we know what is working well and where we need to make improvements.
- We will work together to recruit and retain good staff to work with children and young people with SEND.



## Priority 2

### Timely identification and assessment

- We will have improved processes for EHC needs assessments and decision-making, which involve parents and carers and schools, and result in clear EHC plans.
- Parents and carers will have regular opportunities to feedback on the EHC needs assessment process and their child's annual review.
- We will review and improve the arrangements for assessing children and young people for autism, leading to shorter waiting times.

## Priority 3

### Better outcomes and pathways

- There will be pathway maps for all main groups of children and young people with SEND that have been co-designed with parents and young people.
- We will include a breakdown of the budgets for all EHC plans.
- We will keep school exclusions low and improve the achievement of children and young people with SEND.



## Priority 4

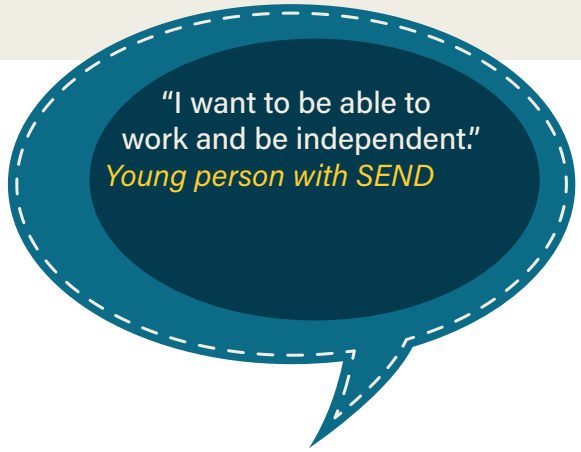
### Clear information and involvement

- We will make sure that the SEND Charter is widely known, is useful and helps parents and carers to get the support they need for their child with SEND.
- Parent and carer volunteers will be trained to carry out 'mystery shopper' activities to identify where we can improve services.
- We want to increase understanding and awareness of SEND locally so that there are fewer reports of negative experiences from parents/carers.

# Priority 5

## Moving on

- We will continue to improve the early identification of children with 'additional needs' under the age of 5.
- We will work with businesses so there is a large increase in the number of supported work experience, internship and apprenticeship places for young people with SEND, as part of the Mayor's Challenge.
- We will have at least 30 additional, supported housing units available for young adults with complex needs in Tower Hamlets.
- We will have clear, updated EHC plans for all young people with SEND from age 14 and make sure they are assessed in good time for any adult services they might need.



# Making it happen

The London Borough of Tower Hamlets and Tower Hamlets Clinical Commissioning Group (NHS) will make sure that all parts of the SEND system – which includes organisations, professionals, parents and carers, along with children and young people with SEND - work together more closely. As a result, we will make better decisions and map out the future direction, together.

We will judge the strategy's success through a set of key performance indicators (KPIs). These KPIs will include:

- There will be a sustainable number of school places for children and young people with an EHC plan and joint planning for the health and social care support to meet their needs.
- A renewed, more thorough process for EHC needs assessment will be established, which ensures good communication with parents and carers and involves schools, together with early years, health and social care.
- The SEND Charter will be widely known and all schools and colleges, and health and care settings, will have committed themselves to the Charter.
- The “Mayor’s Challenge” will have more than trebled the number of supported internships and supported apprenticeships taken up by Tower Hamlets young people with SEND..

The SEND strategic accountability group will monitor how things are improving in Tower Hamlets and will publish an annual progress report for residents.